

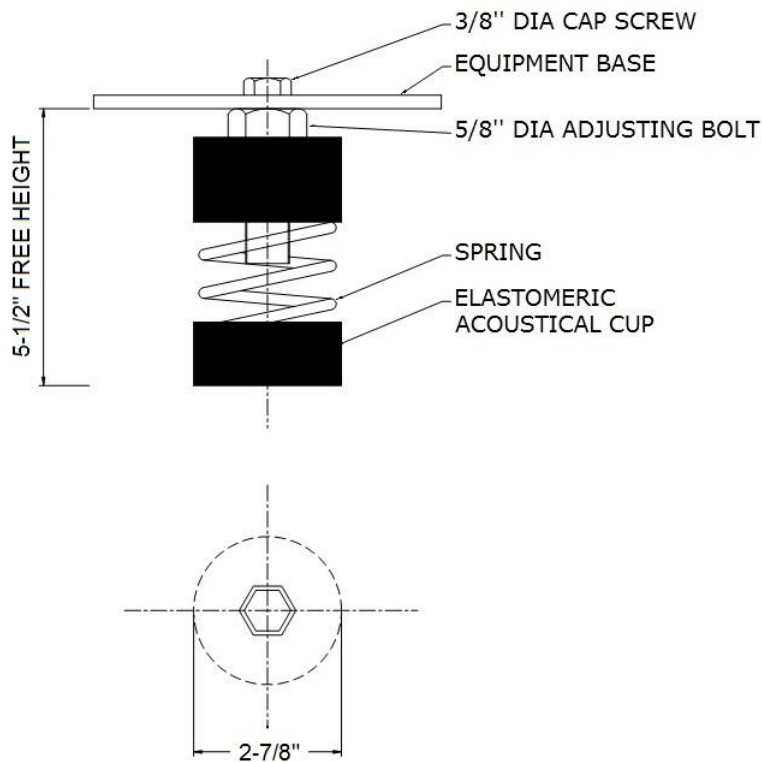


SPRING MOUNTS (RCD or RCE Series)

RCD or **RCE** series spring mounts are unboxed laterally stable steel springs contained in molded neoprene acoustical cups (weld free construction) with leveling bolt assembly. These spring mounts can be supplied with a base plate if required to be bolted to the floor.

These spring mounts are recommended where horizontal and vertical stability are required.

RCD – 100 Series



NOTES:

Spring: Hot Dip Galvanized

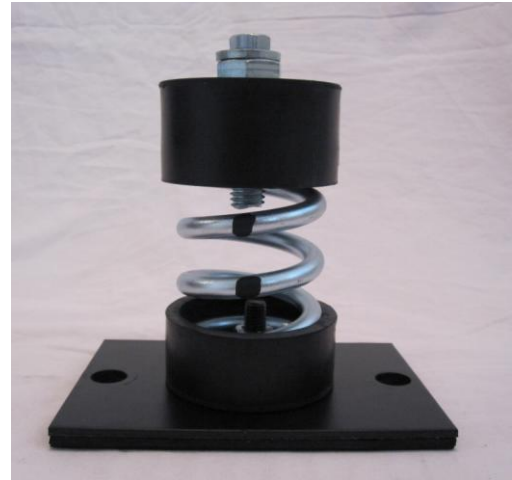
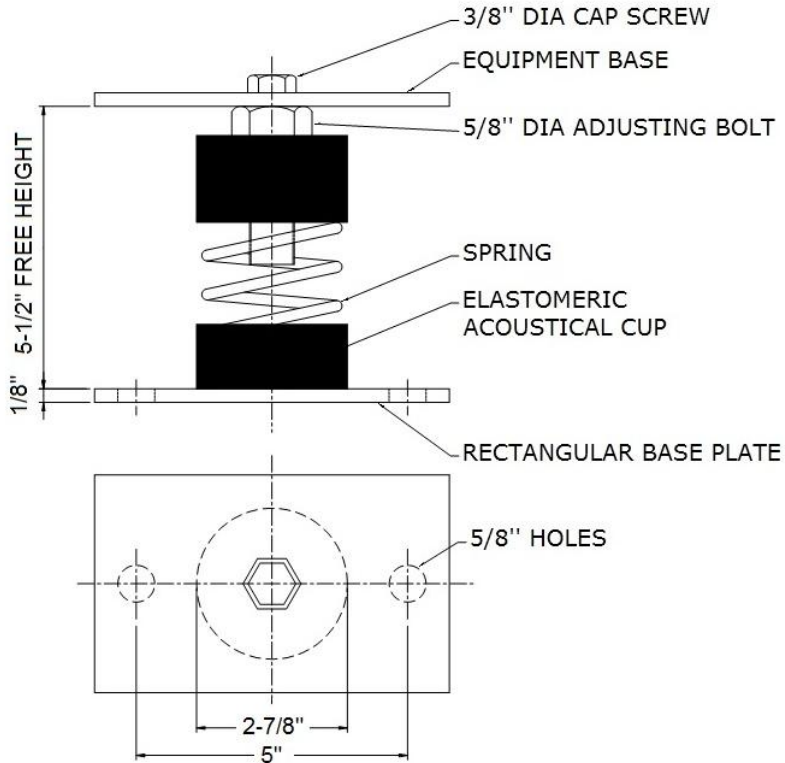
APPLICATIONS:

- pumps
- centrifugal fans
- air handling units
- air compressors

Drawing with dimension details of the RCE Series Spring Mounts and RCD isolator model information is listed on the following page



RCE – 100 Series



NOTES:

- Spring: Hot Dip Galvanized
- Base Plate has non-skid acoustical Neoprene Pad

| ISOLATOR MODEL | RATED LOAD (LBS) | RATED DEFLECTION (INCH) | COLOR | |
|----------------|------------------|-------------------------|--------|------------|
| | | | MAIN | STRIPE |
| RCD-130 | 125 | 1.3 | SILVER | BROWN |
| RCD-131 | 225 | 1.3 | SILVER | ORANGE |
| RCD-132 | 325 | 1.2 | SILVER | GREEN |
| RCD-133 | 450 | 1.2 | SILVER | RED |
| RCD-134 | 600 | 1.2 | SILVER | BLACK |
| RCD-135 | 750 | 1.1 | SILVER | WHITE |
| RCD-136 | 900 | 1.0 | SILVER | GREY |
| RCD-137 | 1100 | 0.9 | SILVER | BLUE |
| RCD-138 | 1800 | 1.0 | SILVER | GOLD |
| RCD-139 | 2500 | 1.0 | SILVER | NIL |
| RCD-130-140 | 720 | 1.0 | SILVER | BROWN/RED |
| RCD-131-140 | 800 | 1.0 | SILVER | ORANGE/RED |
| RCD-132-140 | 900 | 1.0 | SILVER | GREEN/RED |
| RCD-133-140 | 1000 | 1.0 | SILVER | RED/RED |
| RCD-134-140 | 1125 | 1.0 | SILVER | BLACK/RED |
| RCD-135-140 | 1300 | 1.0 | SILVER | WHITE/RED |
| RCD-136-140 | 1525 | 1.0 | SILVER | GREY/RED |
| RCD-137-140 | 1660 | 0.9 | SILVER | BLUE/RED |
| RCD-138-140 | 2425 | 1.0 | SILVER | GOLD/RED |
| RCD-139-140 | 3125 | 1.0 | SILVER | NIL/RED |